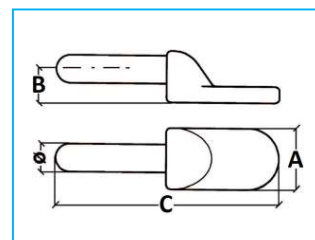
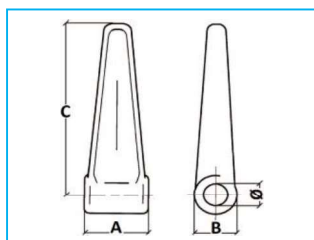
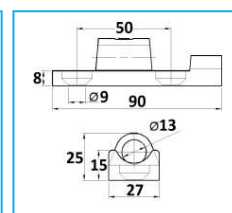


CERNIERE PER SPONDE

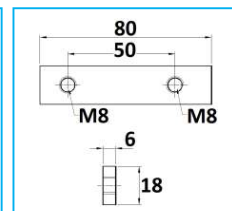
CODICE	DESCRIZIONE	Ø	A	B	C	KG	MATERIALE
JR16001001	Cerniera bombata leggera	12	30	20	90	0,13	Grezzo
JR16001002	Cerniera bombata media	14	34	24	110	0,16	Grezzo
JR16001003	Cerniera bombata pesante	16	40	26	120	0,25	Grezzo
JR16001004	Cerniera piatta pesante	17	35	30	190	0,61	Grezzo
JR16002001	Perno leggero	11	30	10	78	0,11	Grezzo
JR16002002	Perno medio	13	30	13	100	0,12	Grezzo
JR16002003	Perno pesante	15	30	15	100	0,2	Grezzo
JR16002004	Perno per cerniera piatta pes.	16	30	15	112	0,28	Grezzo



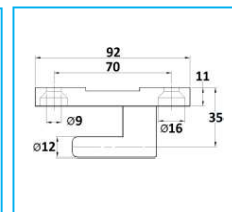
CODICE	DESCRIZIONE	MATERIALE
JR16003001	Cerniera TIR leggera	Zincato
JR16003002	Cerniera TIR leggera	Acciaio inox



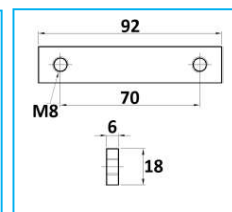
CODICE	DESCRIZIONE	MATERIALE
JR16004001	Piastrina - Interasse 50mm	Zincato



CODICE	DESCRIZIONE	MATERIALE
JR16005001	Perno TIR leggero	Zincato
JR16005002	Perno TIR leggero	Acciaio inox



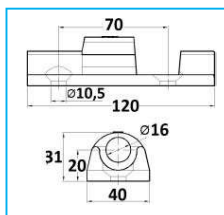
CODICE	DESCRIZIONE	MATERIALE
JR16006001	Piastrina - Interasse 70mm	Zincato



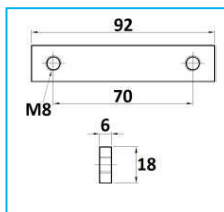
NB: LE MISURE SONO IN "mm".

CERNIERE PER SPONDE

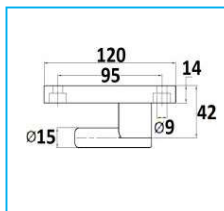
CODICE	DESCRIZIONE	MATERIALRE
JR16007001	Cerniera TIR pesante	Zincato
JR16007002	Cerniera TIR pesante	Acciaio inox



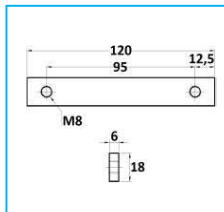
CODICE	DESCRIZIONE	MATERIALE
JR16006001	Piastrina - Interasse 70mm	Zincato



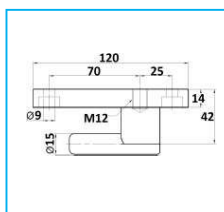
CODICE	DESCRIZIONE	MATERIALRE
JR16008001	Perno TIR pesante	Zincato
JR16008002	Perno TIR pesante	Acciaio inox



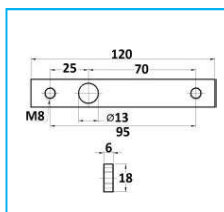
CODICE	DESCRIZIONE	MATERIALE
JR16009001	Piastrina - Interasse 95mm	Zincato



CODICE	DESCRIZIONE	MATERIALRE
JR16010001	Perno TIR pesante con foro M.12	Zincato



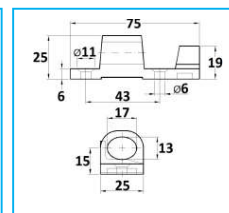
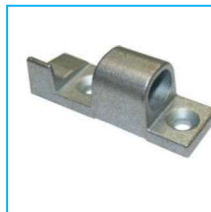
CODICE	DESCRIZIONE	MATERIALRE
JR16010002	Piastrina - Interasse 95mm con foro Ø13	Zincato



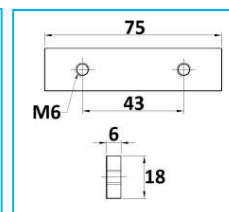
NB: LE MISURE SONO IN "mm".

CERNIERE PER SPONDE

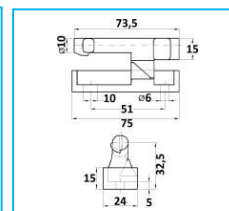
CODICE	DESCRIZIONE	MATERIALE
JR16011001	Cerniera forgiata leggera	Zincato



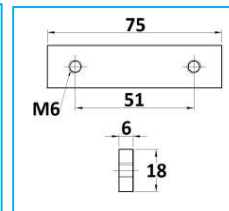
CODICE	DESCRIZIONE	MATERIALE
JR16012001	Piastrina - Interasse 43mm	Zincato



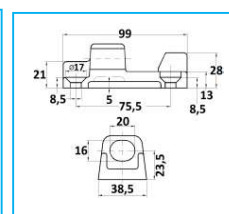
CODICE	DESCRIZIONE	MATERIALE
JR16013001	Perno forgiato leggero	Zincato



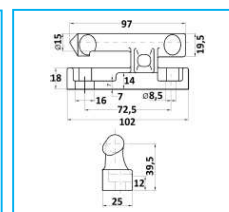
CODICE	DESCRIZIONE	MATERIALE
JR16014001	Piastrina - Interasse 51mm	Zincato



CODICE	DESCRIZIONE	MATERIALE
JR16015001	Cerniera forgiata pesante	Zincato
JR16020001	Piastrina zincata - Int.75	Zincato



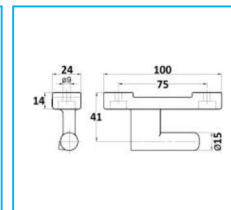
CODICE	DESCRIZIONE	MATERIALE
JR16017001	Perno forgiato pesante	Zincato
JR16006001	Piastrina zincata - Int.70	Zincato



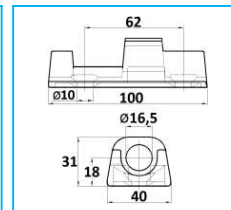
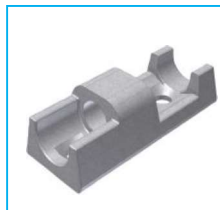
NB: LE MISURE SONO IN "mm".

CERNIERE PER SPONDE

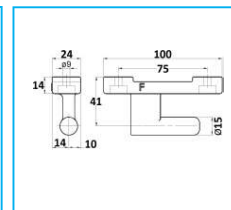
CODICE	DESCRIZIONE	MATERIALE
JR16069001	Perno TIR 95	Zincato



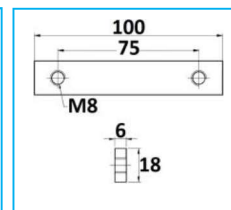
CODICE	DESCRIZIONE	MATERIALE
JR16018001	Cerniera TIR tipo "F"	Zincato
JR16018002	Cerniera TIR tipo "F"	Acciaio Inox



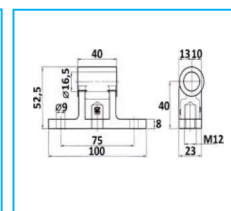
CODICE	DESCRIZIONE	MATERIALE
JR16019001	Perno TIR tipo "F"	Zincato
JR16019002	Perno TIR tipo "F"	Acciaio inox



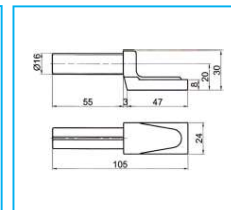
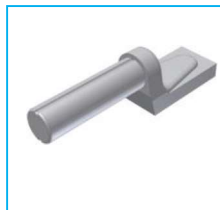
CODICE	DESCRIZIONE	MATERIALE
JR16020001	Piastrina - Interasse 75mm	Zincato



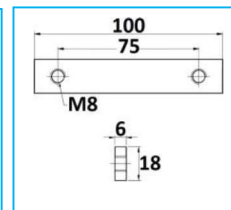
CODICE	DESCRIZIONE	MATERIALE
JR16021001	Cerniera tipo 25/30	Zincato



CODICE	DESCRIZIONE	MATERIALE
JR16021002	Perno forgiato tipo 25/30	Grezzo



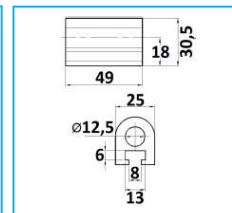
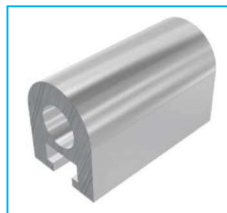
CODICE	DESCRIZIONE	MATERIALE
JR16020001	Piastrina - Interasse 75mm	Zincato



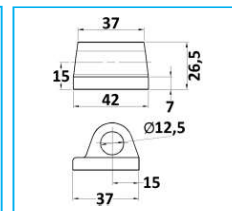
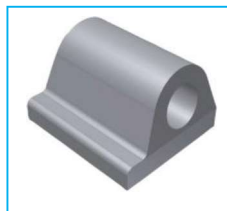
NB: LE MISURE SONO IN "mm".

CERNIERE PER SPONDE

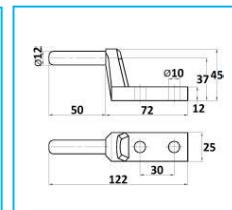
CODICE	DESCRIZIONE	MATERIALRE
JR16022001	Cerniera anodizzata	Alluminio



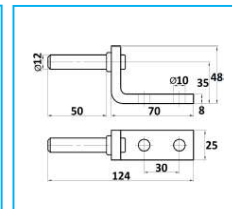
CODICE	DESCRIZIONE	MATERIALE
JR16023001	Cerniera forgiata	Grezzo



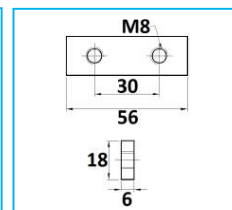
CODICE	DESCRIZIONE	MATERIALRE
JR16024001	Perno forgiato	Zincato



CODICE	DESCRIZIONE	MATERIALE
JR16025001	Perno lamiera stampata	Zincato



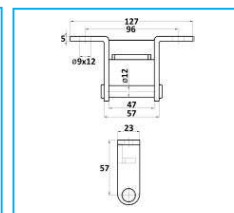
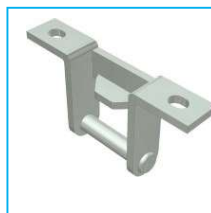
CODICE	DESCRIZIONE	MATERIALE
JR16026001	Piastrina - Interasse 30mm	Zincato



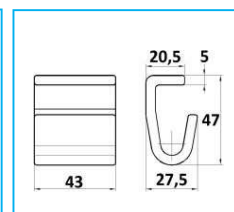
NB: LE MISURE SONO IN "mm".

CERNIERE PER SPONDE

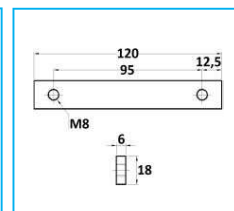
CODICE	DESCRIZIONE	MATERIALRE
JR16027001	Cerniera tipo "R"	Zincato



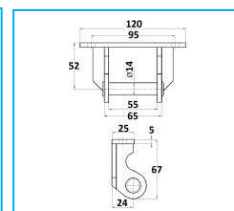
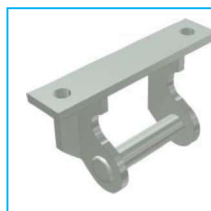
CODICE	DESCRIZIONE	MATERIALE
JR16027002	Scontrino tipo "R"	Grezzo



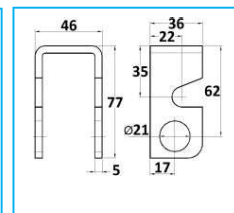
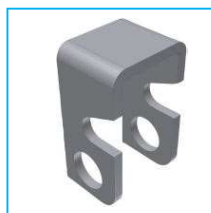
CODICE	DESCRIZIONE	MATERIALRE
JR16009001	Piastrina - Interasse 95mm	Zincato



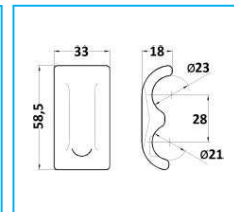
CODICE	DESCRIZIONE	MATERIALE
JR16028001	Cerniera doppia apertura pesante saldata	Zincato



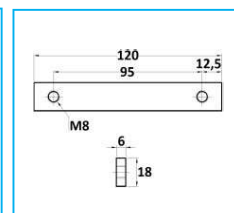
CODICE	DESCRIZIONE	MATERIALRE
JR16028002	Supporto per cerniera pesante	Grezzo



CODICE	DESCRIZIONE	MATERIALRE
JR16028003	Paletta pesante	Grezzo



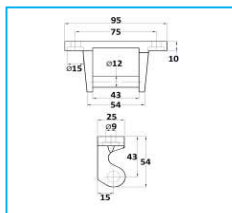
CODICE	DESCRIZIONE	MATERIALE
JR16009001	Piastrina - Interasse 95mm	Zincata



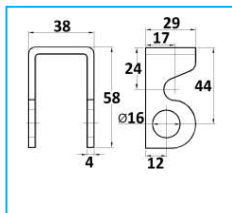
NB: LE MISURE SONO IN "mm".

CERNIERE PER SPONDE

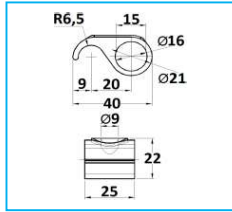
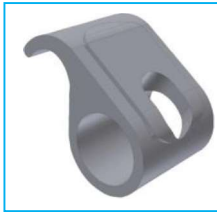
CODICE	DESCRIZIONE	MATERIALE
JR16029001	Cerniera trilaterale leggera in fusione	Zincato
JR16016001	Piastrina zincata - Int.75	Zincato



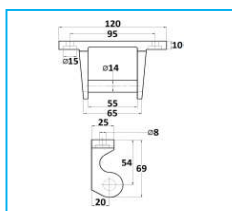
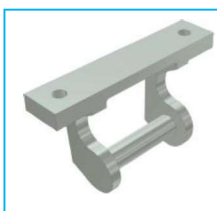
CODICE	DESCRIZIONE	MATERIALE
JR16029002	Supporto per cerniera leggera	Grezzo



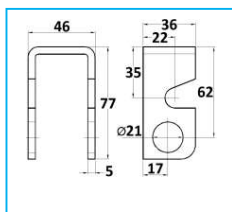
CODICE	DESCRIZIONE	MATERIALE
JR16029003	Paletta leggera	Grezzo



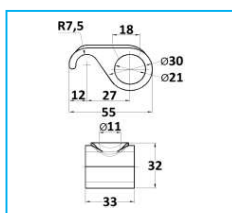
CODICE	DESCRIZIONE	MATERIALE
JR16030001	Cerniera trilaterale pesante in fusione	Zincato
JR16009001	Piastrina zincata - Int.95	Zincato



CODICE	DESCRIZIONE	MATERIALE
JR16028002	Supporto per cerniera pesante	Grezzo



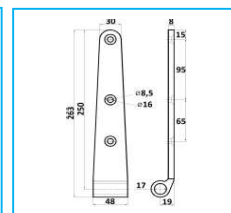
CODICE	DESCRIZIONE	MATERIALE
JR16030003	Paletta pesante	Grezzo



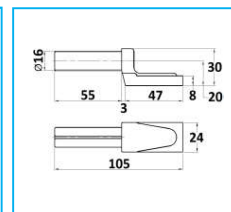
NB: LE MISURE SONO IN "mm".

CERNIERE PER SPONDE

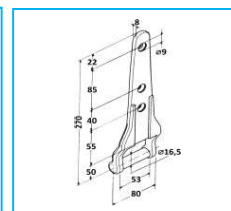
CODICE	DESCRIZIONE	MATERIALRE
JR16031001	Cerniera con fori	Zincato



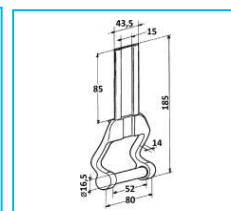
CODICE	DESCRIZIONE	MATERIALE
JR16021002	Perno forgiato Ø16	Grezzo



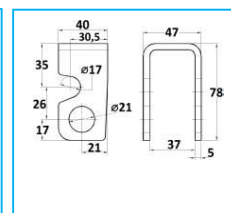
CODICE	DESCRIZIONE	MATERIALRE
JR16032001	Cerniera con fori	Zincato



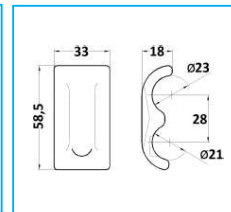
CODICE	DESCRIZIONE	MATERIALRE
JR16032002	Cerniera	Grezzo



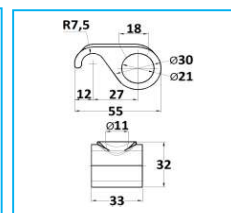
CODICE	DESCRIZIONE	MATERIALRE
JR16032003	Supporto	Grezzo



CODICE	DESCRIZIONE	MATERIALRE
JR16028003	Paletta pesante	Grezzo



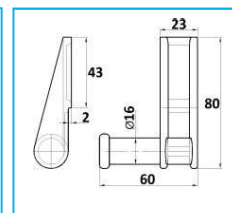
CODICE	DESCRIZIONE	MATERIALE
JR16030003	Paletta pesante	Grezzo



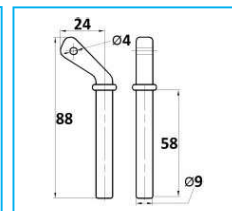
NB: LE MISURE SONO IN "mm".

CERNIERE PER SPONDE

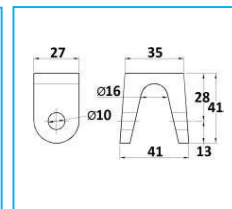
CODICE	DESCRIZIONE	MATERIALE
JR16033001	Cerniera post.leggera - DX	Grezzo
JR16033002	Cerniera post.leggera - SX	Grezzo



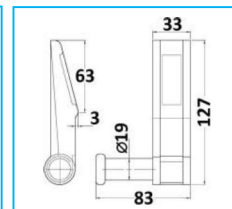
CODICE	DESCRIZIONE	MATERIALE
JR16033003	Spinotto leggero	Grezzo



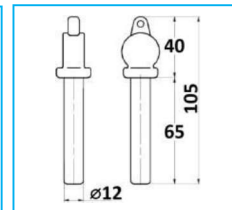
CODICE	DESCRIZIONE	MATERIALE
JR16033004	Supporto per cerniera leggera	Grezzo



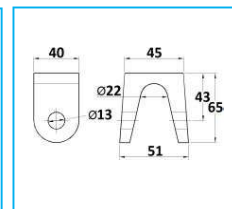
CODICE	DESCRIZIONE	MATERIALE
JR16034001	Cerniera post.pesante - DX	Grezzo
JR16034002	Cerniera post.pesante - SX	Grezzo



CODICE	DESCRIZIONE	MATERIALE
JR16034003	Spinotto pesante	Grezzo



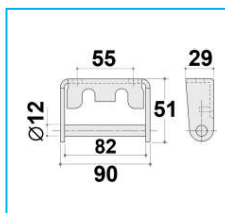
CODICE	DESCRIZIONE	MATERIALE
JR16034004	Supporto per cerniera pesante	Grezzo



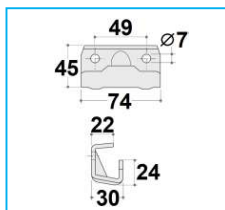
NB: LE MISURE SONO IN "mm".

CERNIERE PER SPONDE

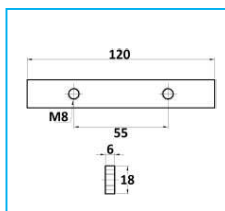
CODICE	DESCRIZIONE	MATERIALRE
JR16063001	Cerniera tipo "Viberti"	Zincato



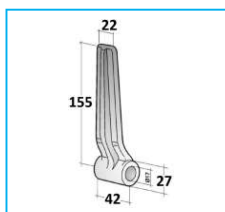
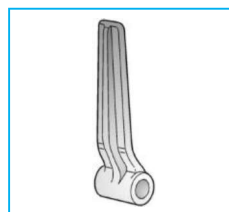
CODICE	DESCRIZIONE	MATERIALE
JR16063002	Cerniera tipo "Viberti" femmina	Zincato



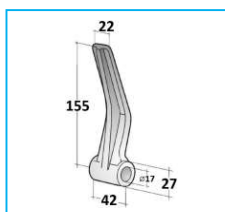
CODICE	DESCRIZIONE	MATERIALE
JR16063003	Piastrina tipo Viberti	Zincato



CODICE	DESCRIZIONE	MATERIALRE
JR16065001	Cerniera tipo "Salerno"	Grezzo



CODICE	DESCRIZIONE	MATERIALE
JR16065002	Cerniera tipo "Lazio"	Grezzo



NB: LE MISURE SONO IN "mm".